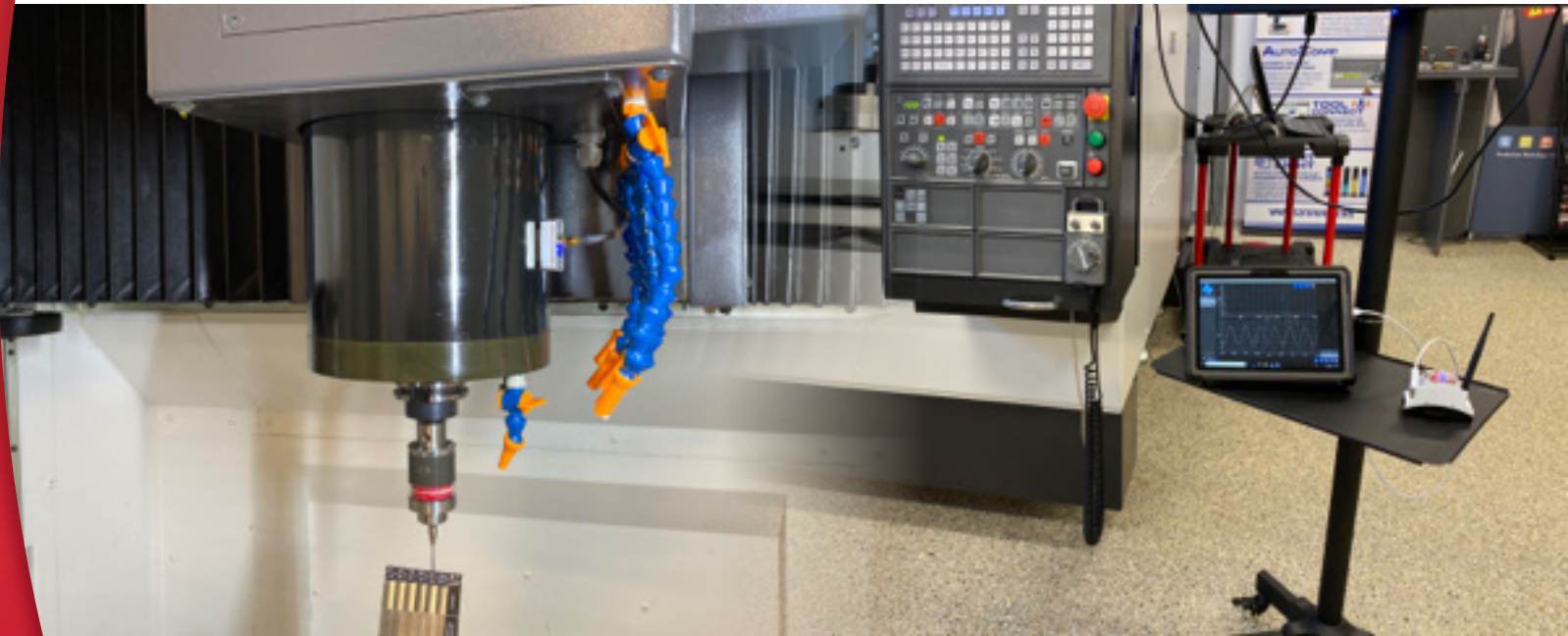




Spindle
Technology

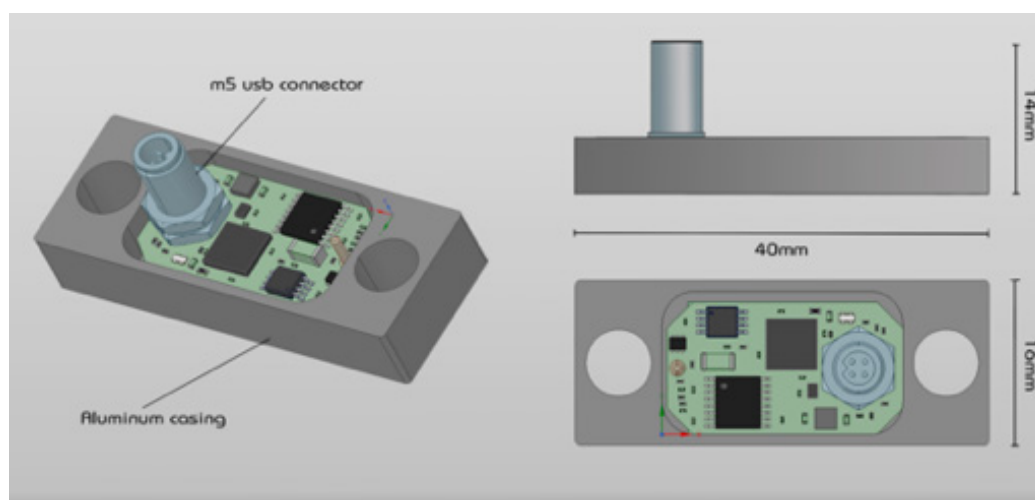
VibePro Tect

REAL TIME DATA | PERMANENTLY POWERED | CONSTANT EKG DISPLAY

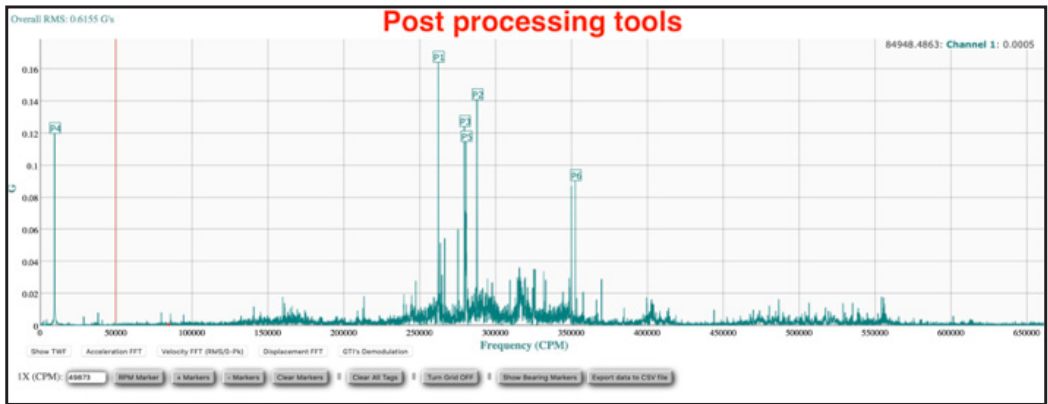
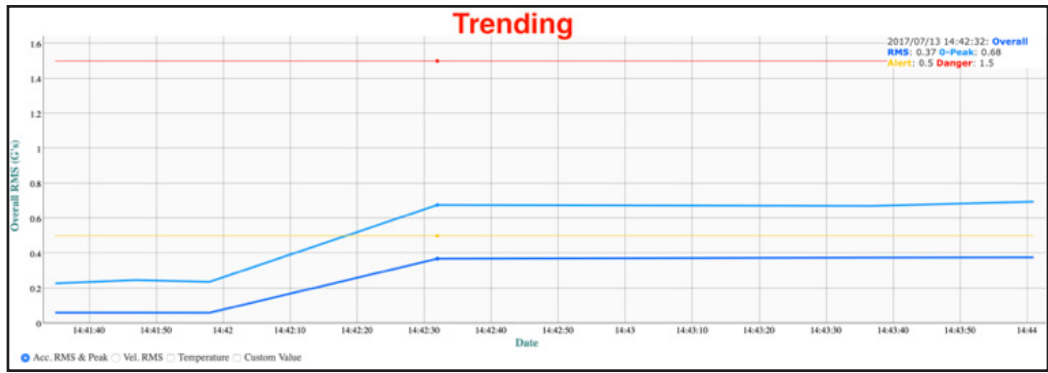


GTI has created a turnkey spindle monitoring system to protect CNC spindles from running unbalanced tools, aggressive cuts, and crashes. This system is constantly monitoring the spindle and has a diagnostic mode for general spindle health including bearing wear.

Once set up, it doesn't need any interaction from the operator. It can also play instructional videos for best practices desired by the client. Once a day it will send a health report to the website for tracking. If an alarm is breached it will send an immediate report and data of the event—including the time of the event and if any long-term damage resulted. All data is remotely accessible.



- USB 2.0 powered, all digital (wireless)
- IP67 sealed connector
- Vibration: 62500 samples/sec 24-bit data
- 22khz bandwidth, full dynamic range
- 3 axis Accelerometer
- Onboard temperature sensor
- Small and easy mounting (magnet available)
- Onboard diagnostics
- Web connection to report Crash or spindle health
- Adjustable thresholds and AI for spindle diagnostics
- Alerts and alarm output capability



888.473.9675 // 33 Zachary Road // Manchester, NH 03109

WWW.GTISPINDLE.COM

The contents of this publication are the copyright of the publisher and may not be reproduced (even extracts) unless prior written permission is granted. Every care has been taken to ensure the accuracy of the information contained in this publication but no liability can be accepted for any loss or damage whether direct, indirect or consequential arising out of the use of the information contained herein.