

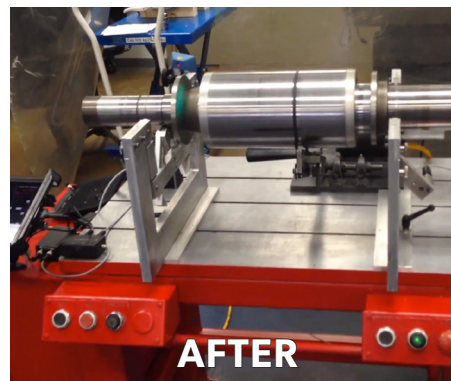
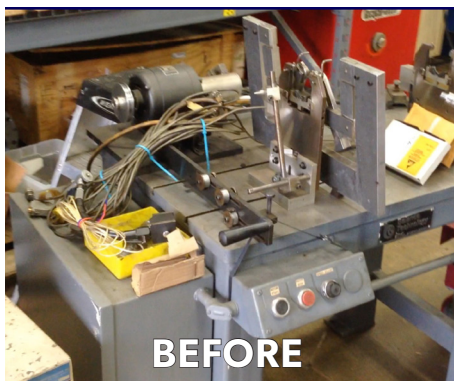


**Predictive**  
Technology

# Retrofit Kit for iPad Platform

MACHINE BALANCING SYSTEMS  
FOR HARD & SOFT BEARINGS





## DESCRIPTION

Our BalancePro retrofits for hard and soft bearings are available as a DIY kit. GTI has several applications optimized for the type of balancing required. BalancePro is available for both in-field and machine shop balancing for soft bearings. BalancePro Force is available for hard bearing balance jobs. Applications feature full reporting with easy email sharing and an intuitive guided step by step to make balancing simple for anyone

## DIY KIT INCLUDES

- 16GB LTE iPad Air with Industrial Case
- BalancePro Application
- RAM mount bracket for iPad
- 3 port, 2-channel DAQ box with A/B switch and mount
- 2 Accelerometers with 10 feet straight cables and magnetic bases
- Tachometer
- Magnetic Mount for Tachometer
- Tachometer Adapter



One of our retrofits in use at a factory in Williams, California. This stanchion can support rotors up to 660 pounds.

Inquire today for pricing on either our retrofitting service or DIY kit. We are happy to provide custom quotes for stanchions of all sizes. Call 603.669.5993 or email [info@gtipredictive.com](mailto:info@gtipredictive.com).

## BALANCING APPS & SPECS

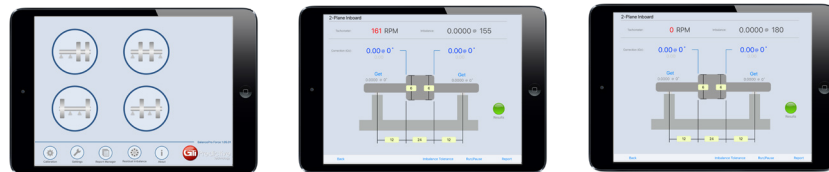
Single and two-plane high precision horizontal rotor balancing. Full accelerometer, phase sensor and DAQ box are needed for vibration readings.



- Correction weight calculations and trim weight adjustments
- 1x filtered vibration measurement in ips, mm/sec or mills
- Phase measurement
- PRM measurement
- Vibration spectrum and automatic 1x marker
- Vector plot with real-time amplitude-phase marker
- Select between oz-inch or gr-mm per weight-radius units
- Clockwise and counter-clockwise selector
- Residual imbalance calibrator
- Permissible residual imbalance selectors using ISO-1940 balancing quality grades
- E-mail report
- Help in PDF format

## BALANCEPRO FORCE FOR HARD BEARINGS

Balance two-plane rotors mounted on hard bearing balancing machines; Strain-gauge sensor, phase sensor and DAQ are needed for vibration readings.



- Two-plane overhung balancing configuration
- Two-plane inboard balancing configuration
- Two-plane outside overhung configuration
- One-plane inboard and one-plane overhung configuration
- Correction weight polar plot
- Split correction weight for the closest two angular locations
- Residual imbalance calculations
- E-mail reports



888.473.9675 // 33 Zachary Road // Manchester, NH 03109

[WWW.GTIPREDICTIVE.COM](http://WWW.GTIPREDICTIVE.COM)

The contents of this publication are the copyright of the publisher and may not be reproduced (even extracts) unless prior written permission is granted. Every care has been taken to ensure the accuracy of the information contained in this publication but no liability can be accepted for any loss or damage whether direct, indirect or consequential arising out of the use of the information contained herein.